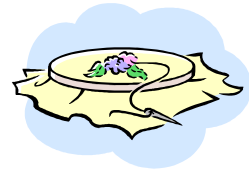


For Office Use Only

Date Received: _____ App. # _____ Space # _____



56th Annual Florida Forest Festival Arts & Crafts Show October 22, 2011



REPEAT VENDOR YES NO

Name _____

Business Name _____

Address _____

City, State, Zip Code _____

Phone _____ E-Mail _____

Fax _____

Items Sold _____

12' x 12' \$55.00

12' x 24' \$90.00

24' x 24' \$160.00

Electricity \$20.00
20 Amp
No Generators Allowed!

Reserved Parking
Automobile \$5.00

Reserved Parking
Automobile w/trailer or
Motorhome \$10.00

Space Amount: \$ _____

Electrical Hookup \$ _____

Reserved Parking \$ _____

Late Fee: \$ _____

TOTAL ENCLOSED \$ _____

**Applications submitted after October 1, 2011
will pay a \$25.00 late fee. NO EXCEPTIONS!**

**A service charge of \$20.00 will be assessed
for all returned checks.**

Please return your complete application with a check made payable to the Florida Forest Festival Office:

Florida Forest Festival Phone: 850-584-8733
PO Box 1062 Fax: 850-584-8030
Perry, FL 32348





56th Annual Florida Forest Festival
October 22, 2011
Forest Capital State Park
U.S. Highway 19 South
Perry, Florida

The annual Arts and Crafts Show and Sale will be featured again this year during the celebration of the Florida Forest Festival. The month's activities will peak on Saturday, October 22. Activities begin at the Forest Capital State Park with the platform ceremonies at 12:00 noon. Then you are invited to join us for the World's Largest Free Fish Fry. During the afternoon, you can enjoy live entertainment, children's games, a carnival, food and lots of fun. Last year we had nearly 20,000 visitors for the Festival. We are looking forward to another great turnout and would like to have you join in the celebration!

PLEASE NOTE THAT WE HAVE 3 SIZES OF SPACES AVAILABLE:

12X12-\$55.00

12X24-\$90.00

24X24-\$160.00

ELECTRICITY IS AVAILABLE AT SOME SITES FOR \$15.00

You cannot break down your booth until 5pm or after!

Absolutely NO EXCEPTIONS!!

Late fee after October 01, 2011 is \$ 25.00

We encourage demonstrations, as they will attract the attention of the crowd to your area. This creates interest and will hopefully increase your sales.

Space placement is made in the order applications are received and by electrical needs. If you would like the same spot as last year, please give us your location number and we will make every effort to accommodate you. Acceptance letters will be mailed early October 2011. When you receive your acceptance letter, a detailed map will be included.

We look forward to seeing you there,

Florida Forest Festival Board & Staff